



Bishopgate Street Liverpool

£115 Per Week

Nestled in the vibrant area of Wavertree, this modern student accommodation on Bishopgate Street offers an ideal living space for those seeking comfort and convenience. The property features a well-appointed room within a five-bedroom house, providing a friendly and sociable atmosphere perfect for student life.

Spanning an impressive 1,109 square feet, this fully furnished room is designed to meet the needs of contemporary living. The accommodation includes a shared reception room, creating a welcoming environment for relaxation and study. With one bedroom and one bathroom, residents will enjoy both privacy and accessibility.

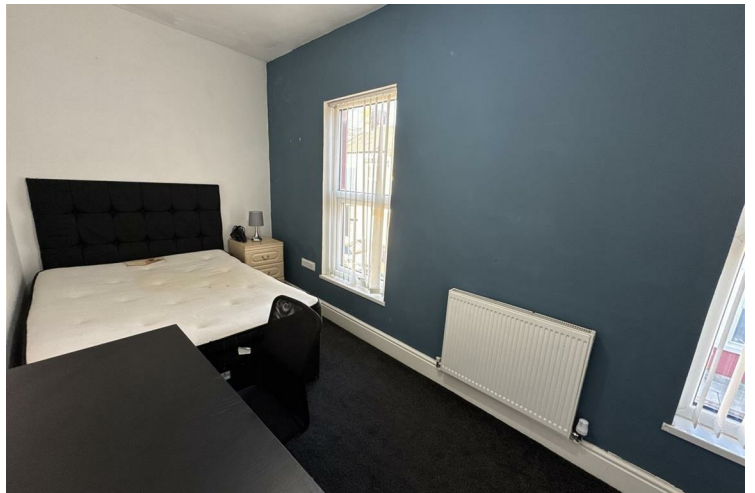
The property is available at a competitive rate of £115 per person per week, making it an attractive option for students looking to balance quality and affordability. Its modern design ensures that all essential amenities are within easy reach, allowing for a hassle-free living experience.



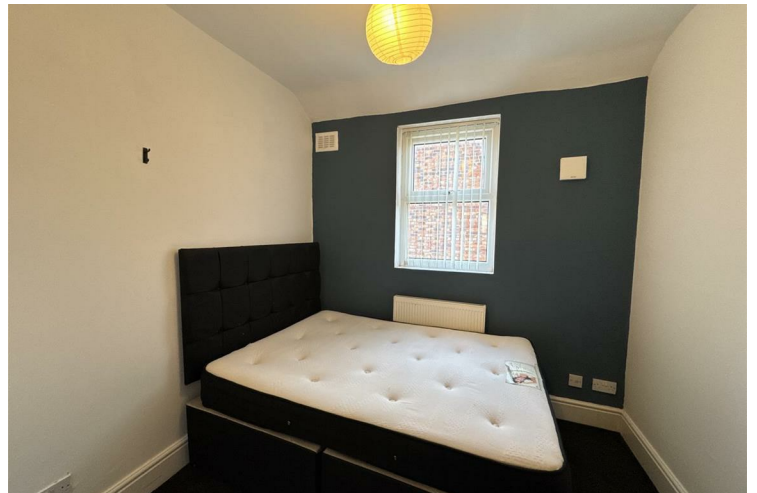
- Five Bedrooms • All Bills Included • Fibre Optic Broadband • Fully Furnished • Ideal for Students • Available for 2024/25 Academic Year!

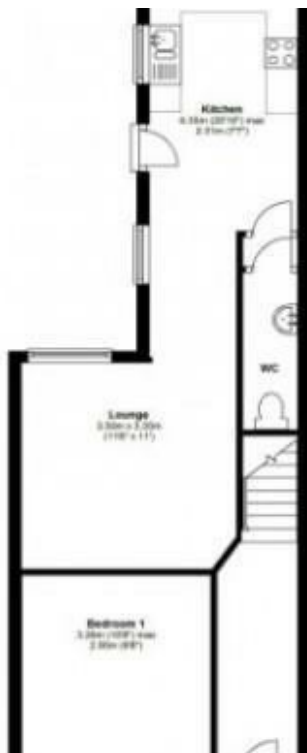
Disclaimer

The information and images provided in this property advertisement are intended for guidance purposes only. While we make every effort to ensure the accuracy of the details, we strongly recommend that interested parties view the property in person to confirm the property's condition and suitability for their specific requirements. The photographs used in this advertisement may have been digitally enhanced and may not accurately represent the current condition of the property. Any measurements or distances provided are approximate and should not be relied upon for any purpose. Furthermore, the description and details provided are based on the landlord's understanding and may be subject to change without notice. Prospective tenants are advised to verify any specific details that are important to them before entering into any agreement. We do not accept any liability for any loss or damage, whether direct or indirect, arising from reliance upon the information provided in this advertisement. We strongly advise all parties to seek professional advice and conduct their own due diligence before making any decisions or commitments related to this property. By viewing this advertisement, you agree to the above disclaimer and acknowledge that any reliance on the information provided is at your own risk. Please note that this disclaimer is subject to change and may be updated without prior notice



- Ground floor WC • Fitted Kitchen • Zero Deposit Option Available





Energy Efficiency Rating		
	Current	Potential
Very energy efficient - lower running costs		
(92 plus) A		
(81-91) B		
(69-80) C		
(55-68) D		
(39-54) E		
(21-38) F		
(1-20) G		
Not energy efficient - higher running costs		
England & Wales	EU Directive 2002/91/EC	

Agents Note: Whilst every care has been taken to prepare these particulars, they are for guidance purposes only. All measurements are approximate and are for general guidance purposes only and whilst every care has been taken to ensure their accuracy, they should not be relied upon and potential buyers/tenants are advised to recheck the measurements

Pall Mall Liverpool Mistoria
22 Pall Mall
Liverpool
L3 6AL

0151 282 1539
info@mistoria.co.uk
mistoria.co.uk

